

requisites for excellence. Jeff Wyzchowski is a "fine aggressiveness needed to play my brand of ball game."

connotes team.

## Mid-Season Statistics

	GAMES	TP	AV	RB	A
Bollwage	8	127	15.8	39	26
Parsons	8	91	11.4	74	18
Ianniello	8	80	10.0	29	19
Borzanskis	6	70	11.7	33	12
Blount	7	51	7.3	25	34
Manzo	8	70	8.8	49	18
Berning	8	11	1.4	19	4
Aubrecht	8	37	4.6	35	1
McKeon	6	24	4.0	12	3

## Sportlights

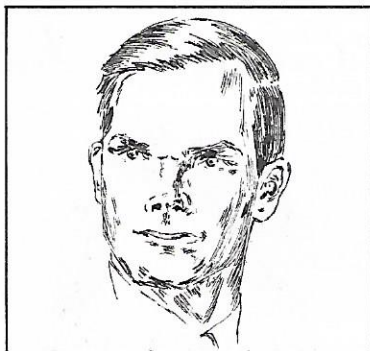


Pat Ianiello

Strength is his name; basketball and baseball his games. Pat Ianiello, four year vet, is rarely seen without his sweat pants on. As a starting forward on the illustrious basketball team, and as a "well-rounded" first baseman on the championship baseball squad, Pat is acquainted with balls of all sizes and shapes. Supporting a hefty 12 point per game average, he complements an aggressive offensive combine. As co-captain of the baseball team, responsibilities will weigh heavy on his shoulders.

Midst the roaring crowd, a lone squaw can be heard. Cheering is her duty.

The "Big I's hot rod," a snazy '60 Chevy, peels daily through "Ye Old Parkin' Lot."



Larry Aubrecht

Larry's figure is dominant in both academic and athletic pursuits. Parochial C foes fear his aggressive board bounding. In the lane, Larry is unstoppable. His massive physique, and eight point average, excite the crowd. Larry typifies Trinity in his attitudes and endeavors. He most adequately fills the "credibility gap" by coming off a stunted bench.

Larry refuses to believe that his tiny English Ford will hinder his growth. So far it hasn't.

Future interests will envelope Larry in the scientific field. His high academic standards have set the pace for science oriented seniors.

With the seeds of knowledge sown, Larry's fertile mind will continue to expand at either the University of Delaware, or Rutgers.

## Pats' Pitch

by Patti and Patty

With midseason approaching in the Girls' Intramurals Program, the basketball all-stars are showing their colors. Andrea Rzepka's awesome sixsome, clobbered both Patty Peck's and Kathy Boshier's teams by scores of 11-6 and 6-1 respectively. Marianne Pryor's squad bombed out to Melanie Hess's in a close contest of 14-13.

Denise Boshier's powerfics shut-out Anne Fraatz's Club by 11-0. A sophomore clash resulted in Marie Smith's girls bowing to an able team piloted by Cathy Loomis, 10-8. Georgeanne Borushko's efforts were also in vain as her team bit the dust 13-6. Pat Nagle's players mopped up Mary Jane Murphy's, 4-0.

At the second meeting of the Girls' Sports Club, Mrs. Haller introduced the basics of tumbling. "Once again Trintiy girls displayed their apt coordination," remarked an enthusiastic senior.

## Sports Quiz

1. What is the official length and width of a high school basketball court?
2. What is the circumference of a basketball?
3. Why are basketball rims painted orange?
4. Who was the founder of basketball, and where was the first game played?

### ANSWERS

1. An official high school basketball court is 74 feet long and 50 feet wide.
2. A basketball is 29-1/2 inches in circumference.
3. Basketball rims are painted orange to aid the shooter in his efficiency.
4. Dr. James A. Naismith founded basketball in 1891; the first game was played at Springfield College, Springfield, Mass.

## Coach's

Coach Dougher has been adoption of the numerous co. Against Immaculata of S. used with great success. W. lowed only 9 points in the fir. iello and Jim Blount for their. ficult to label many technic. "man to man with zone princ. When asked what games problems, Coach Dougher exp. and does not look too far



"The Chief."

## Seniors Up

The "Super Senior Bowl" sulted in an untimely senior feat. The contest reached proportions with the announ. ment that both Mr. R. Stevens Mr. K. McGowan would part. pate. This surprise elem. might have disturbed the se. athletes mentally. Neverthel. they surged to a first quar. lead of 14-12, led by the hot sh. ing hand of Frank Koefler.

The seniors controlled tempo of the game, but jus. victory appeared plausibl. fresh Jerry Smith, varsity umni, poured in 7 quick poi. Despite a concurred injury, B. Schaffer displayed a specta. lar defensive effort in stealing ball numerous times, and capti. izing on the quick shot. His se. period spark enabled the fac. to take an adequate 30-24 h. time advantage.

Confident that the faculty w. tire, due to the rising action o. third quarter, the seniors ra. their forces and closed the g. a mere three points, 41-38.

REVEILLE FEB 1968